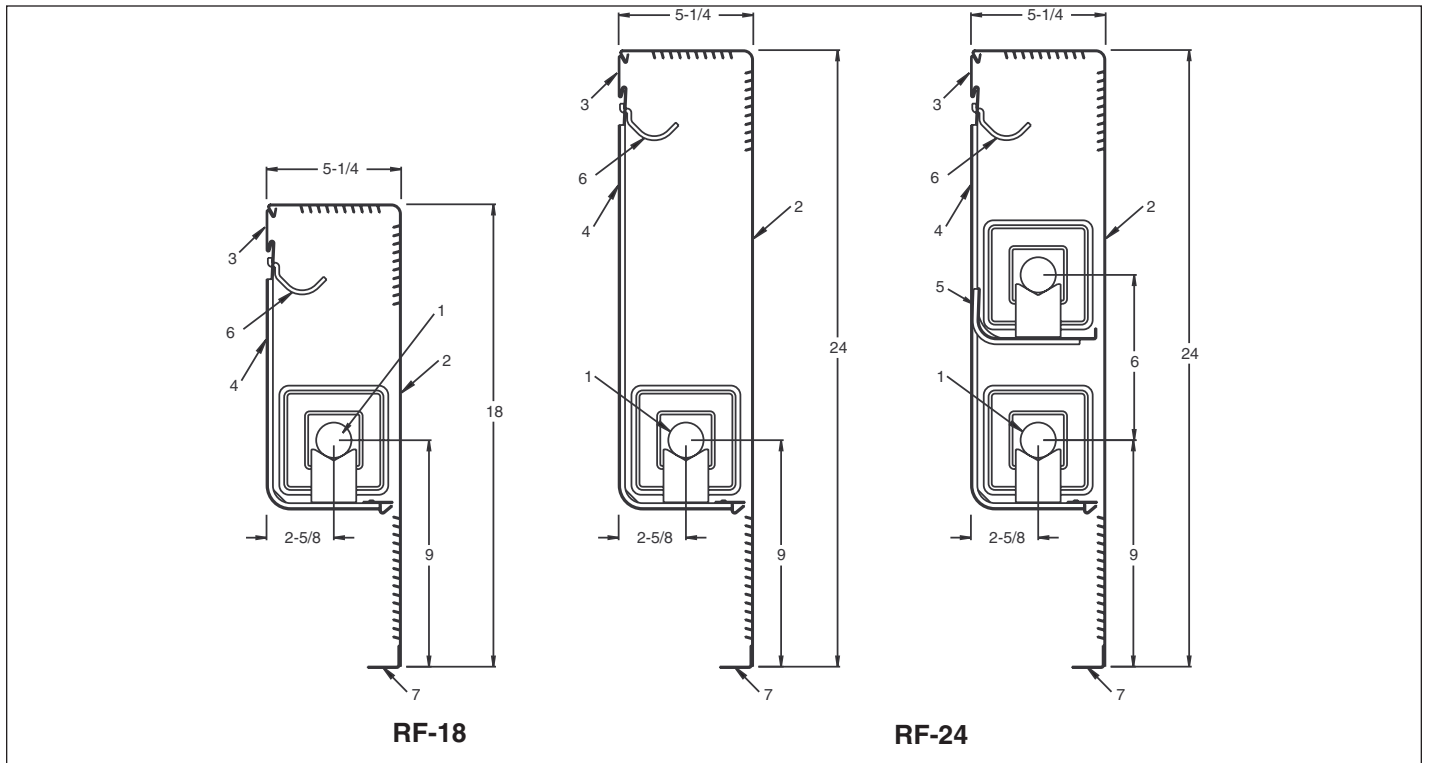


SUBMITTAL DATA commercial fin tube radiation

Model RF Front and Top Outlet, Floor Mounted

Job name & location _____ Date _____
 Architect _____ Engineer _____ Sheet _____ of _____
 Contractor _____ Order No. _____
 Submitted by _____



- 1 - Heating Element
- 2 - Enclosure
- 3 - Hanger Strip

- 4 - Enclosure Wall Support (EWS)
- 5 - Element Support Assembly (ESA)
- 6 - Return Pipe Hanger
- 7 - Floor Angle

Enclosure Specifications

Lengths: 2' to 8' in 6" increments
 Model: RF-18 RF-24
 Gauge: 18 ga. 16 ga. 14 ga.
 Standard Baked Enamel Finish: TR-13 Tan
 Optional Baked Enamel Finish:
 Per AIR75-402 _____
 Per AIR75-400 _____
 Dampers: Knob Operated Tamper Proof

Heating Element Specifications

Seamless copper tube diameter:
 3/4" 1" 1-1/4"
 Aluminum fin size:
 4-1/4" x 4-1/4" 2-3/4" x 4-1/4"
 Aluminum fins/ft:
 34 42 50
 Rows of Elements:
 1
 2 @ 6"

Performance

Average water temperature _____ °F
 Water flow rate: _____ GPM, _____ Ft/sec.
 Steam Pressure: _____ psi
 Entering Air Temperature: _____ °F
 Rating: _____ Btu/hr/ft

AIR12-426.1

Model RF Front and Top Outlet, Floor Mounted

Floor Angle Single Floor Angle Double Floor Angle
 Available in lengths of 2' to 8' in 6" increments

Enclosure Supports

Enclosure wall supports (EWS):

- 18" enclosure EWS-12
 24" enclosure EWS-18

Enclosure wall support (EWS) with one element cradle attached:

- 3/4" & 1" tube 1-1/4" tube
 18" enclosure EWS-1275 EWS-1212
 24" enclosure EWS-1875 EWS-1812

Element support assembly (ESA):

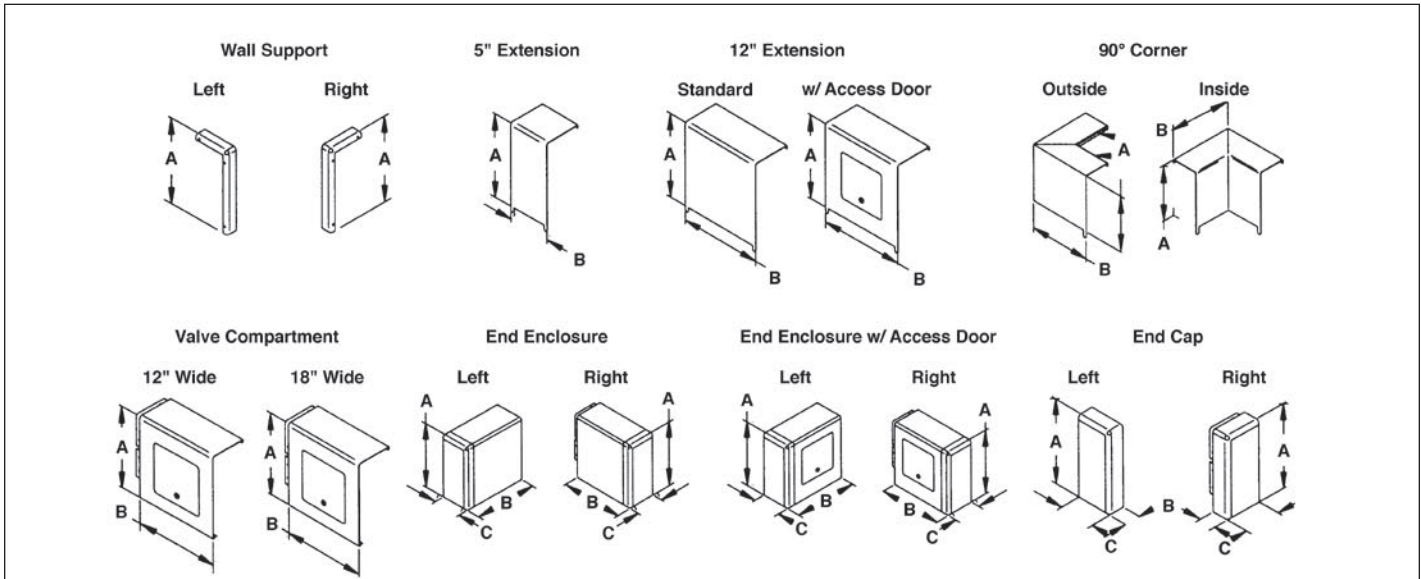
- 3/4" & 1" tube ESA-75
 1-1/4" tube ESA-12

Note: For models SF & RF, use one smaller mounting support bracket. Ex: for 24" enclosure, use 18" support bracket.

Accessories - 20 gauge

- 18" enclosure 24" enclosure
- Wall support - left
 Wall support - right
 5" Wide enclosure extension (O)
 12" Wide enclosure extension (O)
 12" Wide enclosure extension w/access door (O)
 90° Inside corner (O)
 90° Outside corner (O)
 12" Wide valve compartment (S)
- 18" Wide valve compartment (S)
 12" Wide end enclosure - left (S)
 12" Wide end enclosure - right (S)
 12" Wide end enclosure w/access door - left (S)
 12" Wide end enclosure w/access door - right (S)
 End cap - left (S)
 End cap - right (S)

(O) overlapping fit (S) slip joint fit to enclosure



Accessory Dimensions

Enclosure			12" Extension		90° Corner		Valve Compartment		End Enclosure		End Cap	
	Dim	Wall Support	Extension	Standard	w/Access Door	Inside	outside	12" Wide	18" Wide	Standard		w/Access Door
RF-18/24	A	18/24	18/24	18/24	18/24	18/24	18/24	18/24	18/24	18/24	18/24	18/24
	B		5	12	12	8.25	9	12	18	12	12	1.50
	C					4.25				5.25	5.25	5.25